



**GLOBAL MANUFACTURER  
OF RAILWAY AND TRAMWAY TURNOUTS**

**dt** Výhybkárna  
a strojírna<sup>®</sup>

An aerial photograph of a railway yard with numerous tracks and a yellow map overlay. The map is semi-transparent and shows the geographical outlines of the Czech Republic and Slovakia. Two orange dots on the map mark the locations of Prostějov and Nové Mesto nad Váhom. The background image is in a blue-tinted color palette.

● **Prostějov**  
(Czech Republic)

● **Nové Mesto nad Váhom**  
(Slovakia)

more than

**120**

years of tradition and experience



establishment of the company:

**1900**

turnouts produced per year:

**600+**

number of employees:

**450+**

production facilities:

**2**

A close-up photograph of railway tracks. The image shows several parallel metal rails supported by concrete sleepers. The tracks are set on a bed of brown gravel ballast. The perspective is from an elevated angle, looking down at the tracks. The lighting is bright, highlighting the textures of the metal, concrete, and gravel.

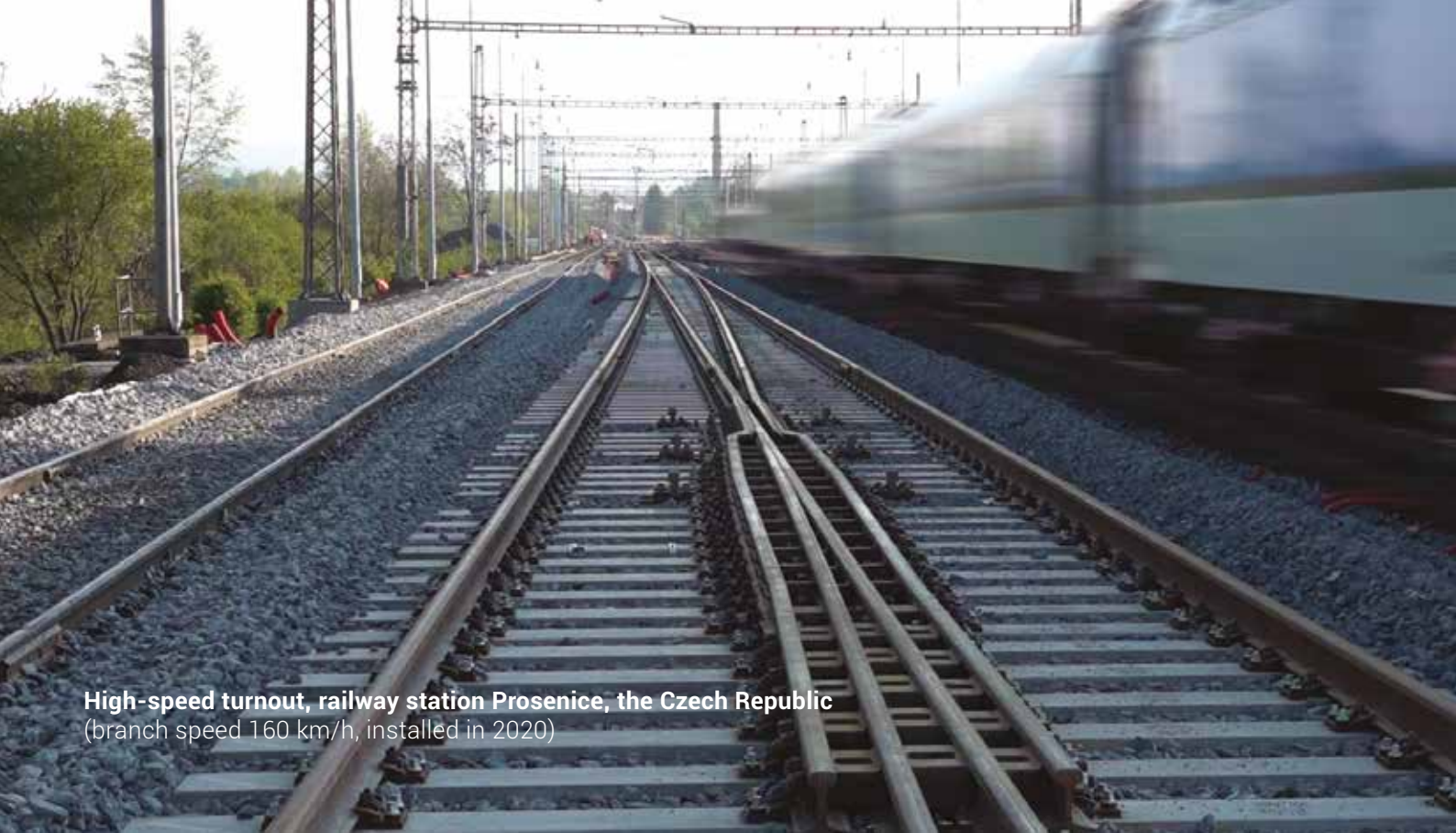
## our specialization

- high-speed turnouts
- railway turnouts
- tramway turnouts
- signalling technology
- turnout components and spare parts

## our technologies and capabilities

- R&D, design, manufacture and assembly
- heat-treatment
- metallography
- switch rail forging capacity
- explosive depth hardening (EDH)





**High-speed turnout, railway station Prosenice, the Czech Republic**  
(branch speed 160 km/h, installed in 2020)



Bremen, Germany



Doha, Qatar



Palembang, Indonesia



Solna, Sweden



**30+** countries where we export

**dt** Výhybkárna  
a strojírna®

**DT - Výhybkárna a strojírna, a.s.**  
Kojetínská 4750/6, 796 01 Prostějov, Czech Republic

[www.dtvscz](http://www.dtvscz)

